

DT261

Extend SAP S/4HANA to Meet Unique Business Needs the Cloud-Native Way

Artem Kovalov, SAP

PUBLIC

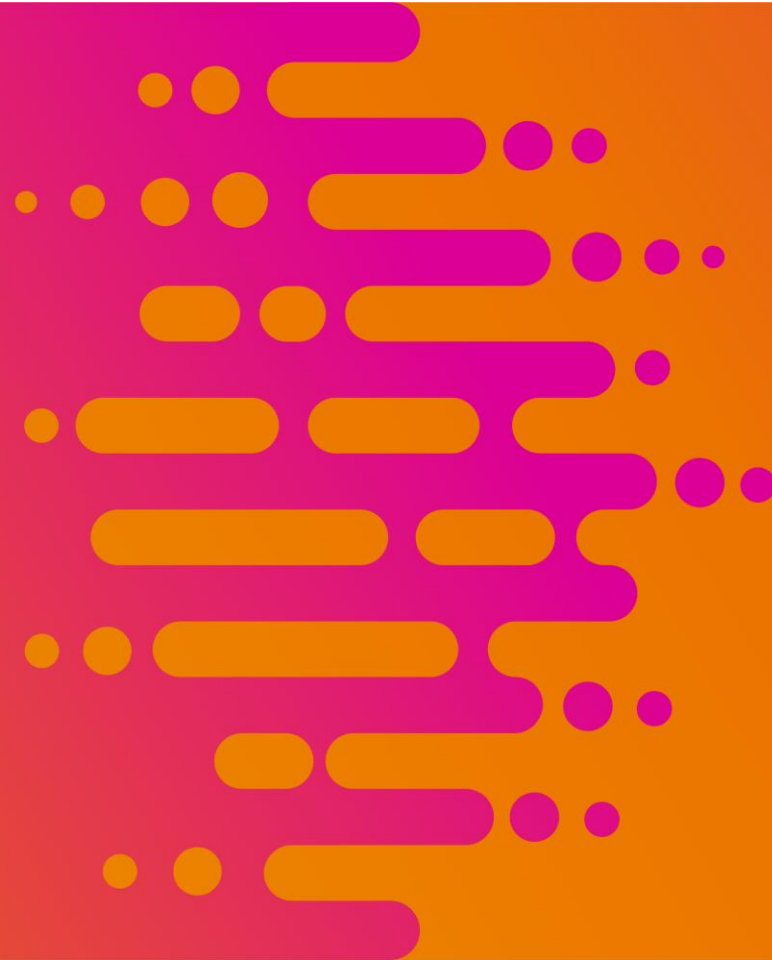
Disclaimer

The information in this presentation is confidential and proprietary to SAP and may not be disclosed without the permission of SAP. Except for your obligation to protect confidential information, this presentation is not subject to your license agreement or any other service or subscription agreement with SAP. SAP has no obligation to pursue any course of business outlined in this presentation or any related document, or to develop or release any functionality mentioned therein.

This presentation, or any related document and SAP's strategy and possible future developments, products and or platforms directions and functionality are all subject to change and may be changed by SAP at any time for any reason without notice. The information in this presentation is not a commitment, promise or legal obligation to deliver any material, code or functionality. This presentation is provided without a warranty of any kind, either express or implied, including but not limited to, the implied warranties of merchantability, fitness for a particular purpose, or non-infringement. This presentation is for informational purposes and may not be incorporated into a contract. SAP assumes no responsibility for errors or omissions in this presentation, except if such damages were caused by SAP's intentional or gross negligence.

All forward-looking statements are subject to various risks and uncertainties that could cause actual results to differ materially from expectations. Readers are cautioned not to place undue reliance on these forward-looking statements, which speak only as of their dates, and they should not be relied upon in making purchasing decisions.

Why do we need extensibility?

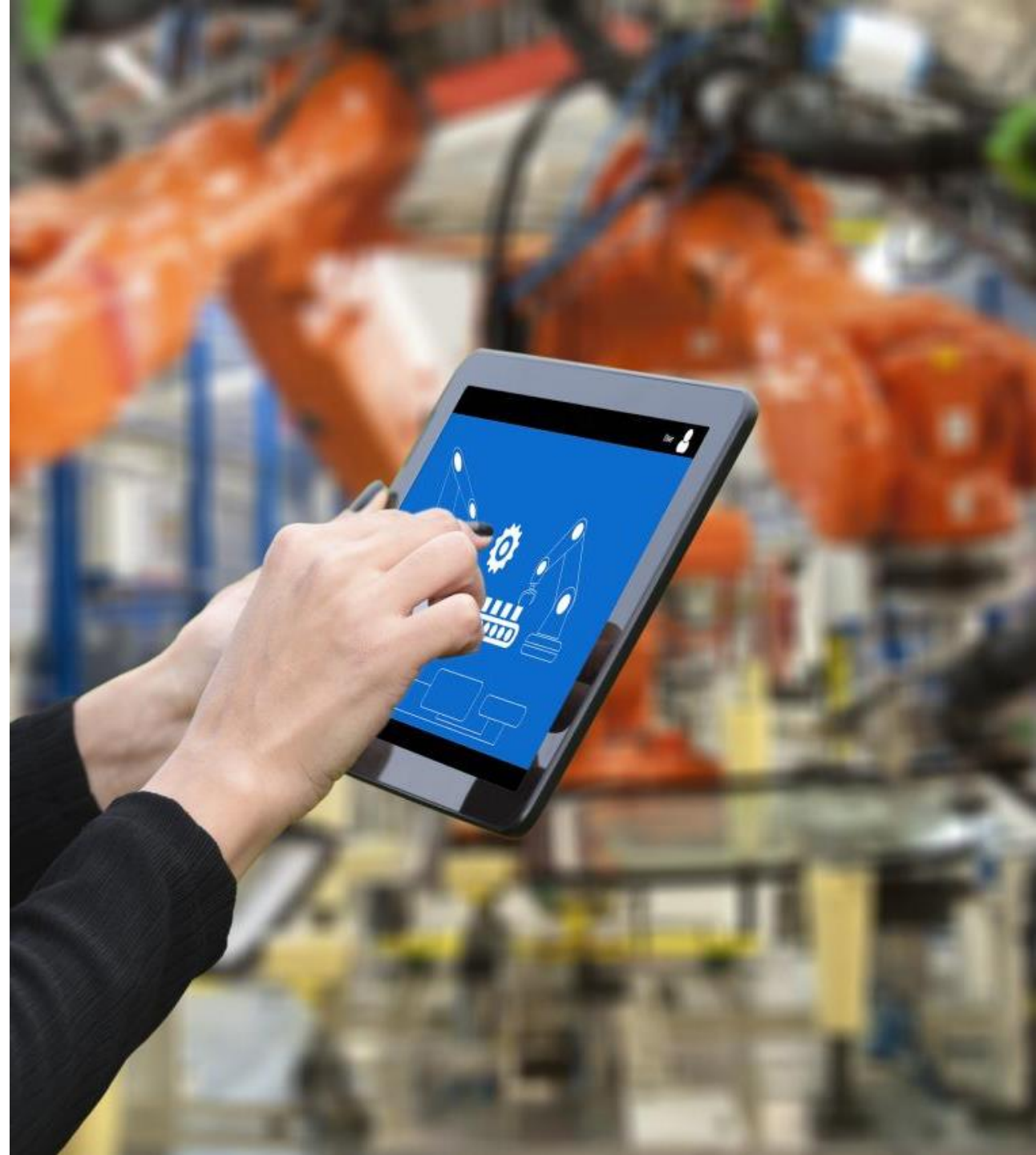


**The ultimate
challenge
for business
is
adapting to
change**

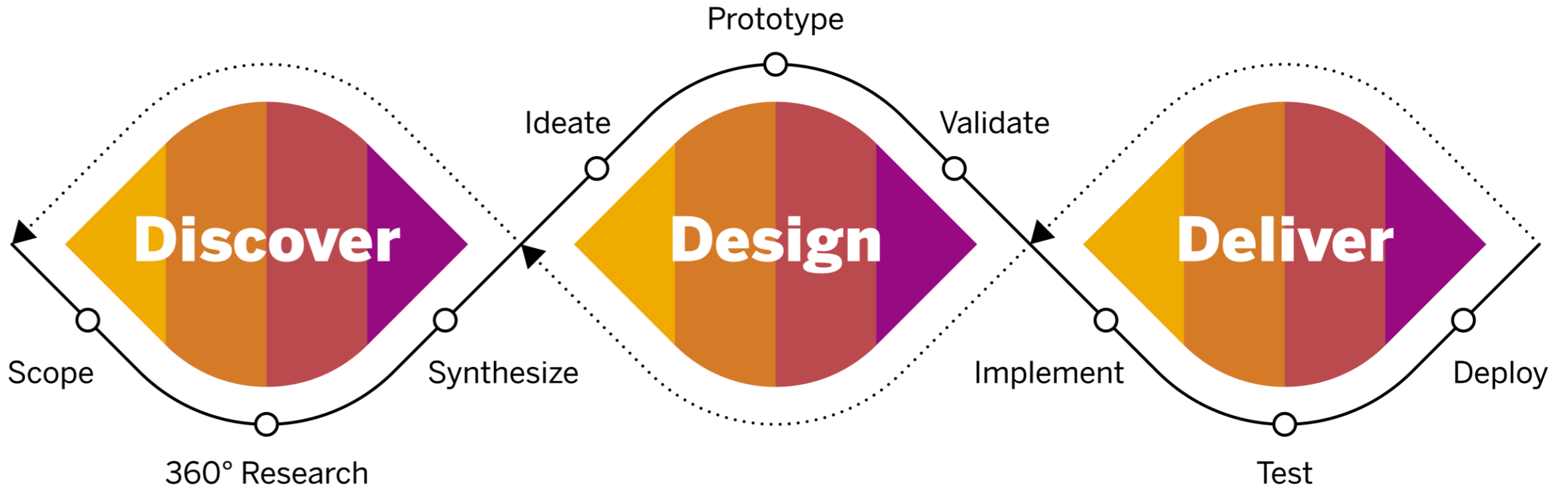




**Extensibility is
the perfect
solution
used by
business to
address this
challenge**



Cloud-native extensions speed up the **innovations loop**







Subaccounts



Directories



Resource Providers



Boosters



System Landscape >



Entitlements >



Usage Analytics



Trial Home



Global Account: [REDACTED] - Subaccounts

Subdomain: [REDACTED]

All: 1

New Subaccount

Switch Global Account

Delete Trial Account

All Environments ▾

All Data Centers ▾



trial

Provider: Amazon Web Services (AWS)

Region: Europe (Frankfurt) - AWS

Description: -none-

Environment: Multi-Environment



Learn how [global accounts and subaccounts relate to each other](#) and find [recommendations for setting up your account model](#).

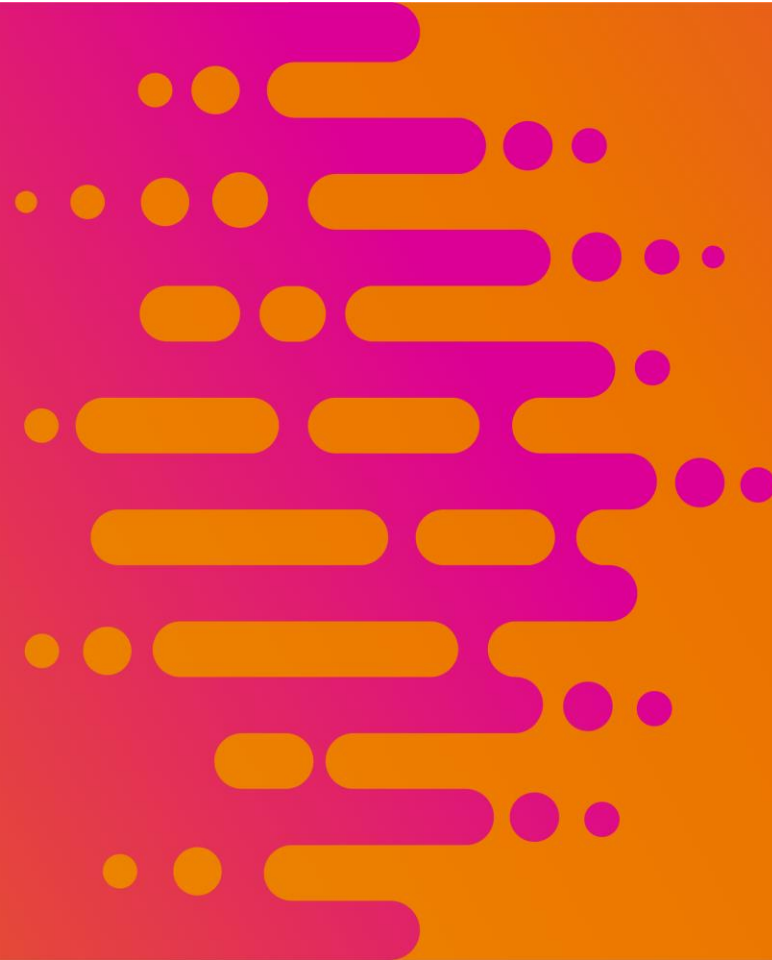


Useful Links



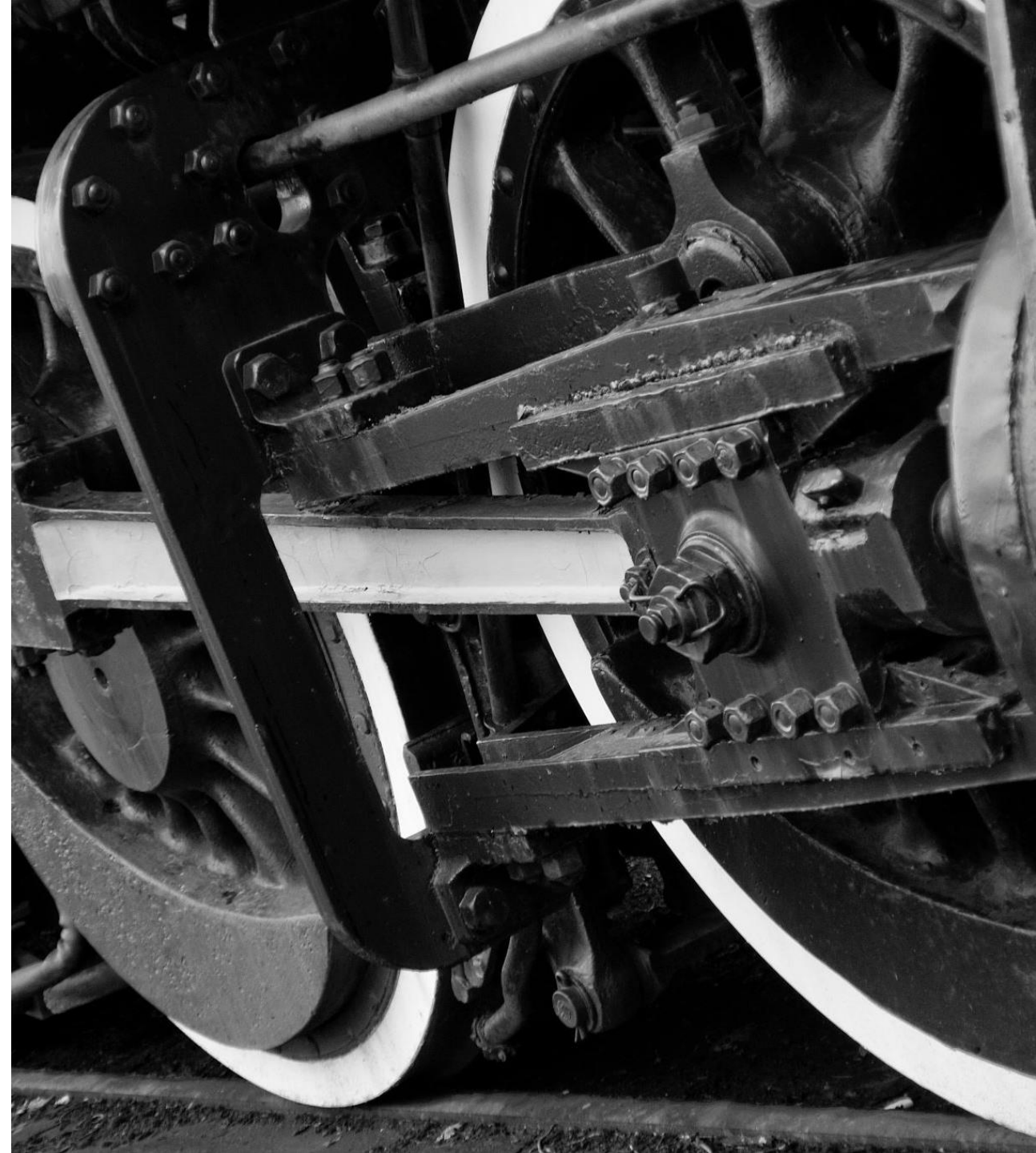
Legal Information

Toxic vs Healthy extension



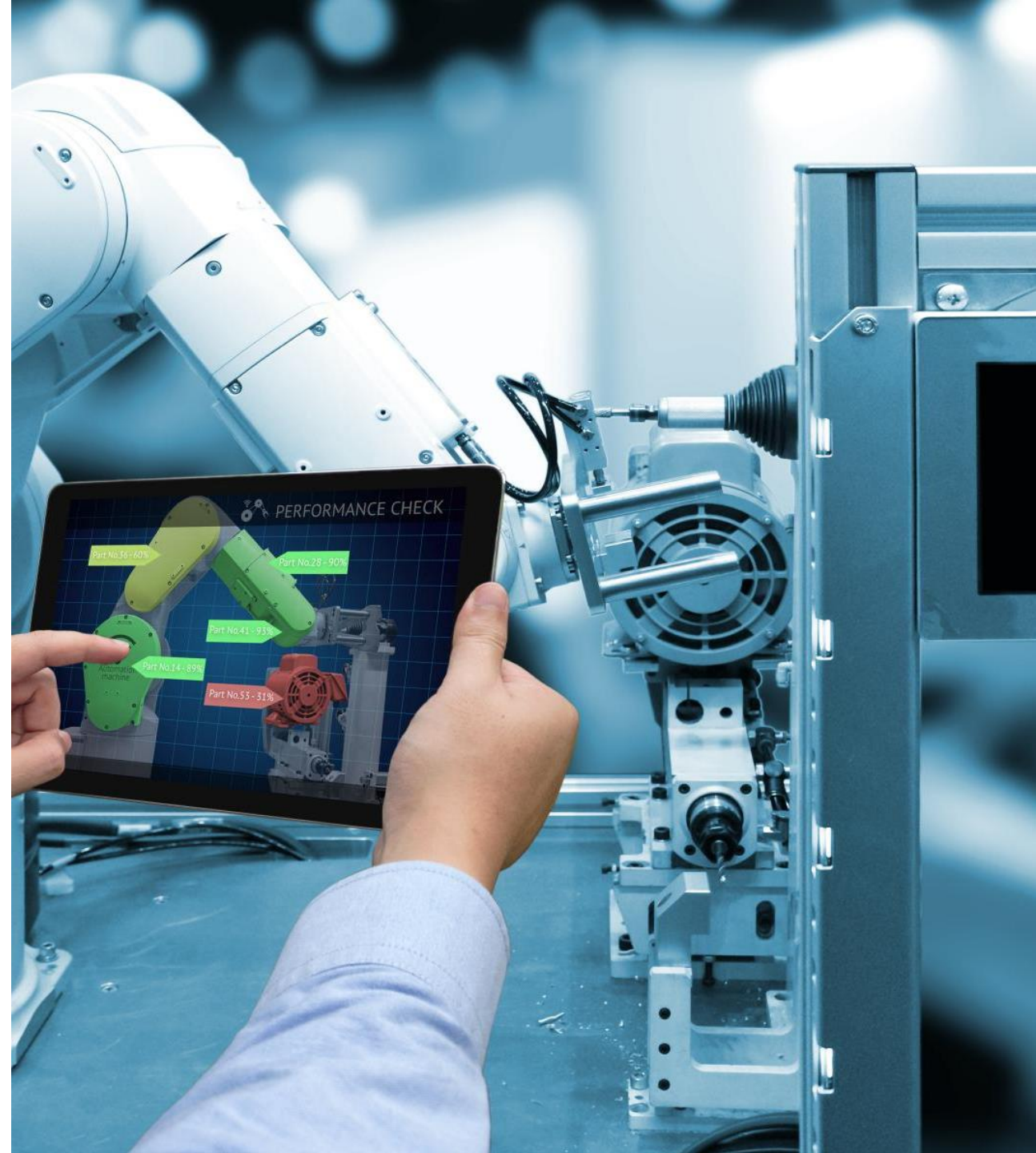
Toxic extensions – beware!

- Non-cloud native
- High total cost of ownership (TCO)
- Slow time to market
- Delayed access to innovations
- Obsolete and fragile eco-system
- High risk of sunk costs
- Difficult maintenance and updates
- Low investments protection

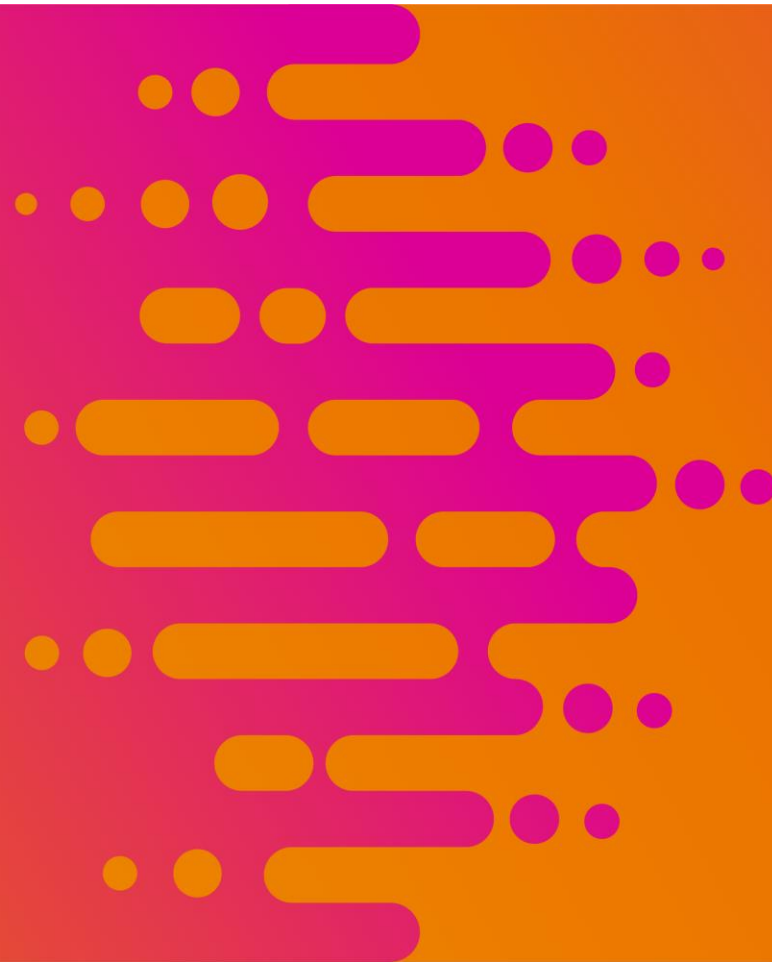


Endorse healthy extensions!

- Cloud-native!
- Low total cost of ownership (TCO)
- Agility of innovations
- Modern and resilient eco-system
- Quick updates, timely delivery
- Almost no sunk costs
- Simplified maintenance
- Safeguarding your investments

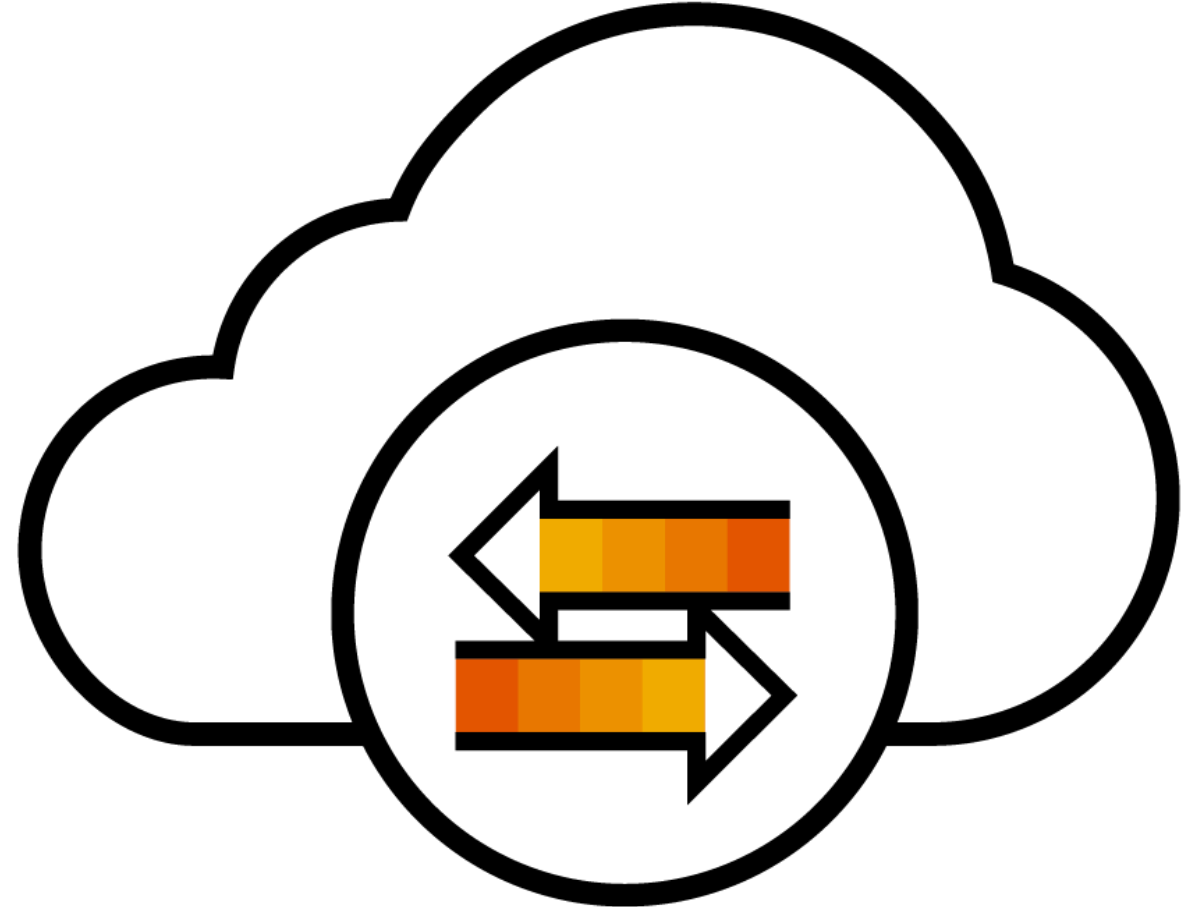


Cloud-native qualities



Elasticity

Use as much
resources as
needed to always
ensure minimal
TCO



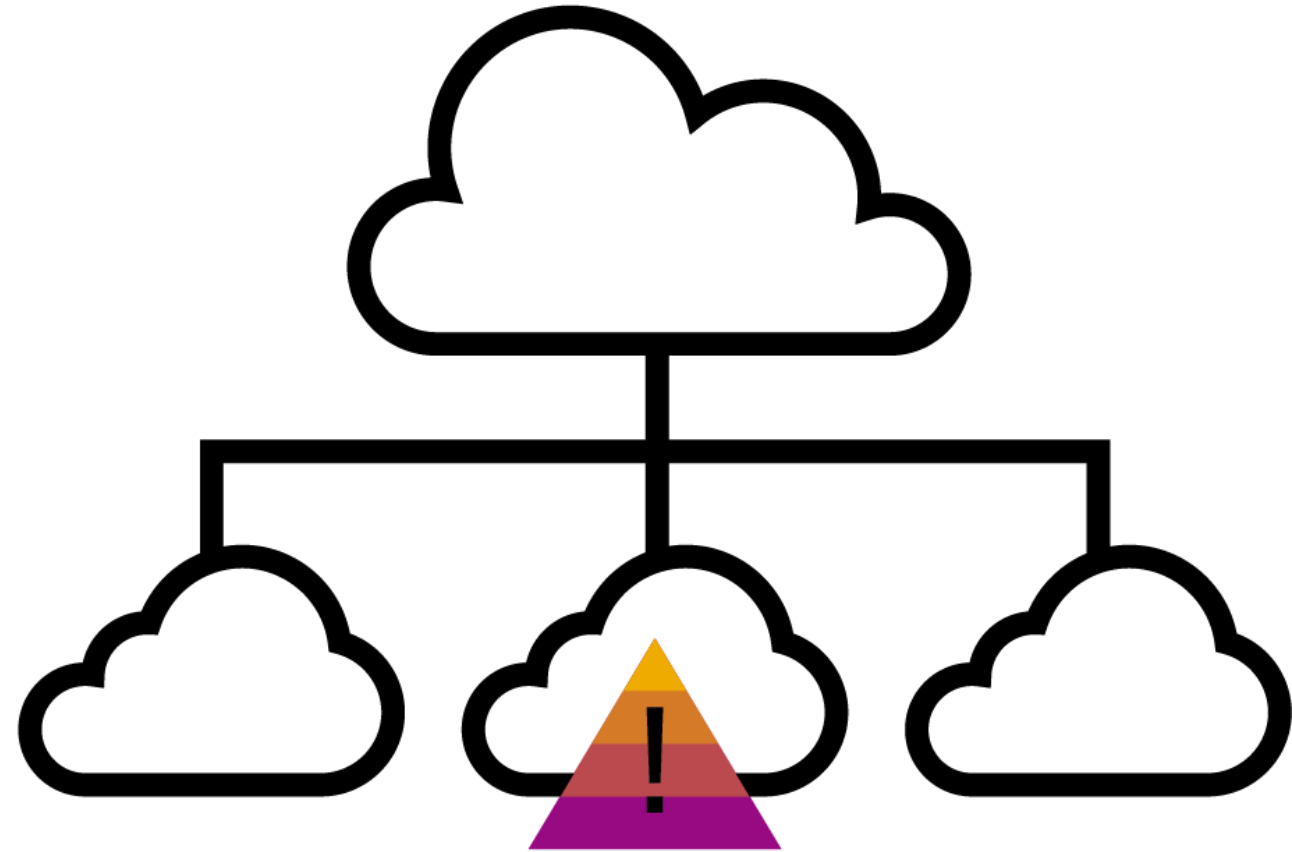
Scalability

Sustain spikes and compensate dips in load to ensure best quality of service



Reliability

Stay resilient to failures by load balancing and fast recovery times



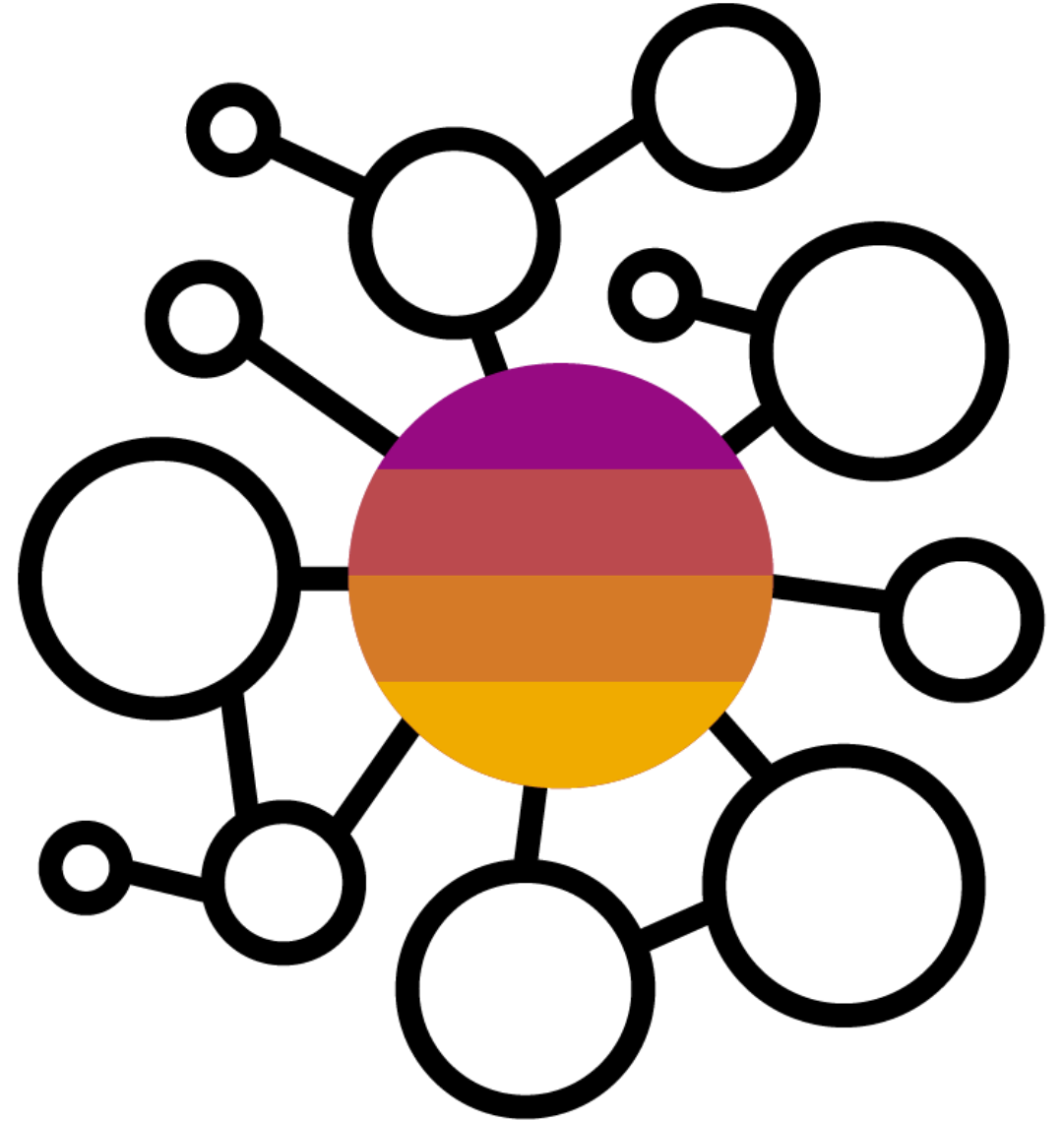
Continuous delivery

Optimize time to market by automated feature delivery after every commit



Ecosystem

Enjoy rich ecosystem
and speed up
development by
using value add
services

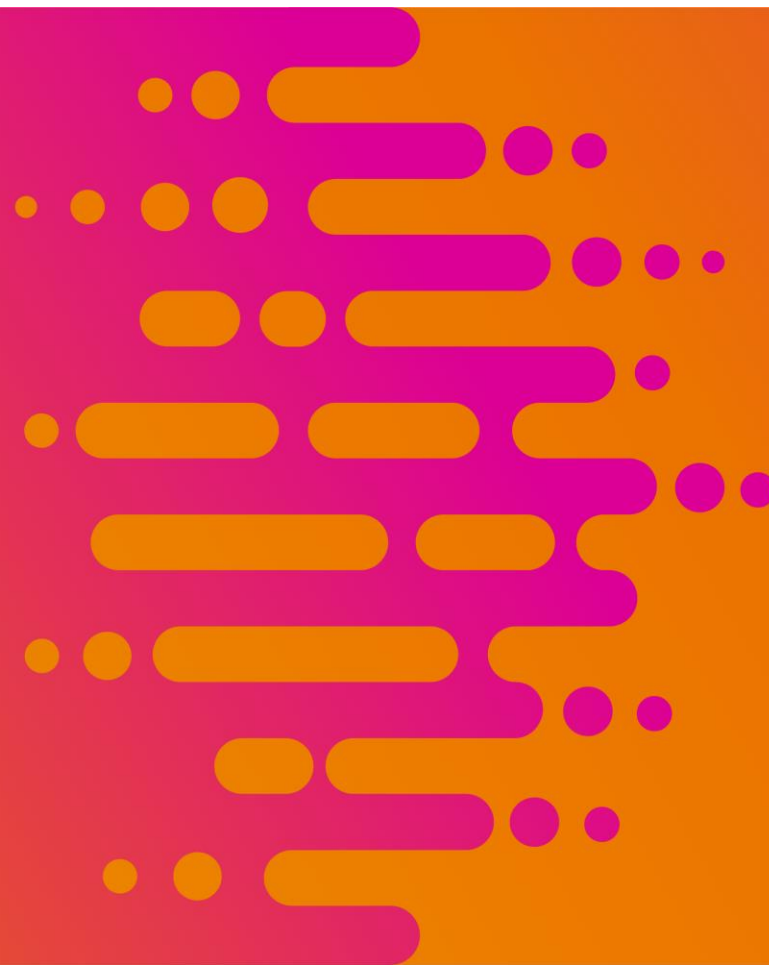


Monitoring and analytics

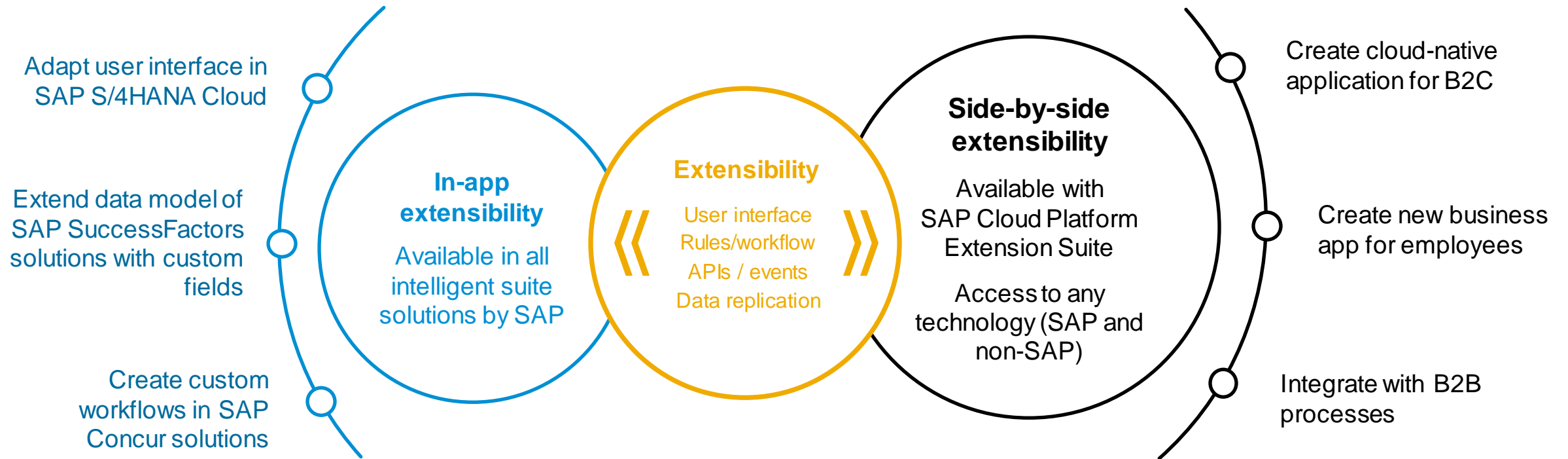
Prevent service disruptions by timely reaction and graceful handling of incidents



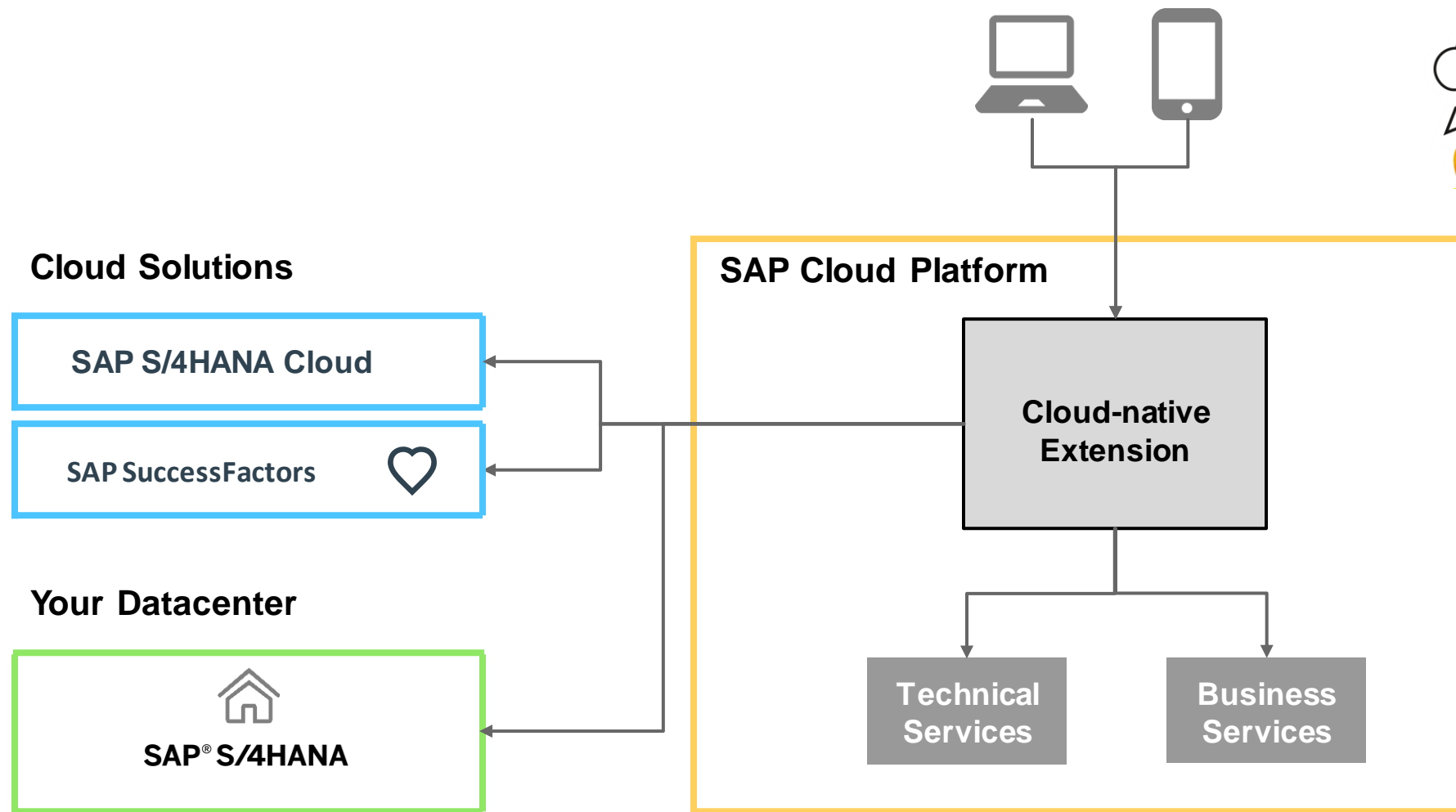
Extensibility types



What extensibility model to choose?



Side-by-side extensibility in SAP




Introduction of the exercise scenario




The example application


SAP Cloud SDK Webshop



SAP Cloud SDK Mug

22.50 USD





Quantity 1 

Add to Shopping Cart

Extending SAP S/4HANA Printed Book

79.95 USD





Quantity 1 

Add to Shopping Cart

SAP Cloud SDK for JS Sticker

0.20 USD





Quantity 1 

Add to Shopping Cart

SAP Cloud SDK for Java Sticker

0.20 USD

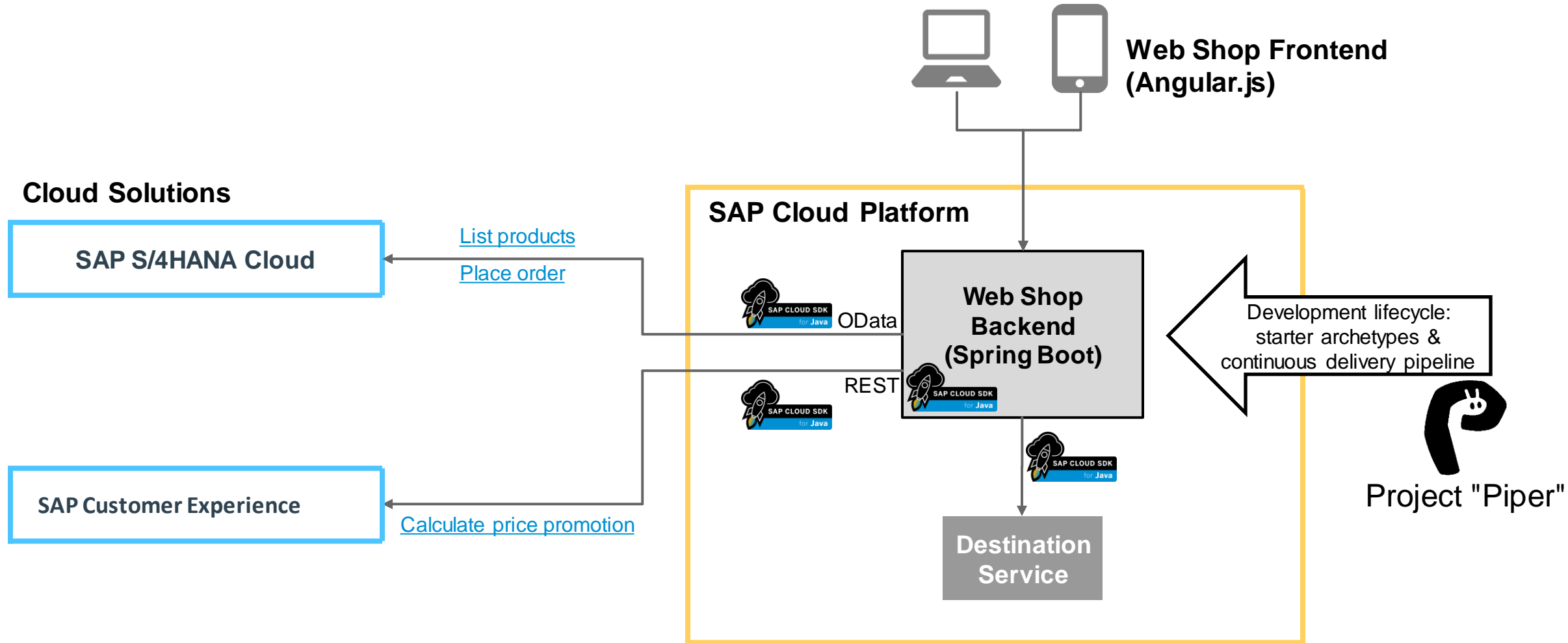


Quantity 1 

Add to Shopping Cart

Exercise app

Powered by the **SAP Cloud SDK** and **Project "Piper"**





Exercise

Web-shop application